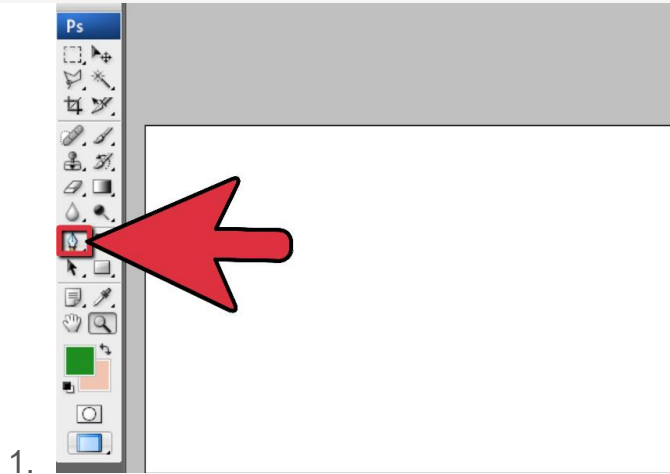


How to Bend Text in Photoshop

<http://www.wikihow.com/Bend-Text-in-Photoshop>

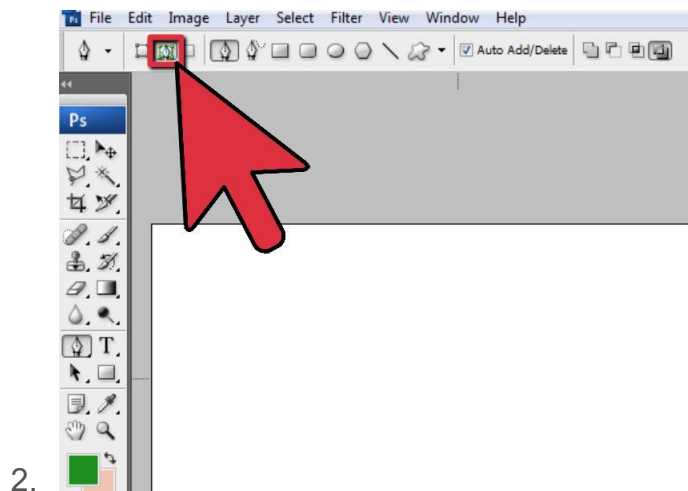
Method 1

Using the Pen Tool



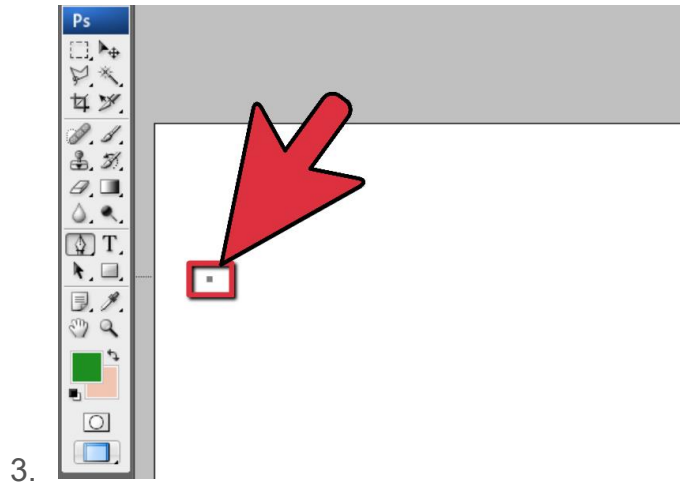
1

Select the Pen tool.



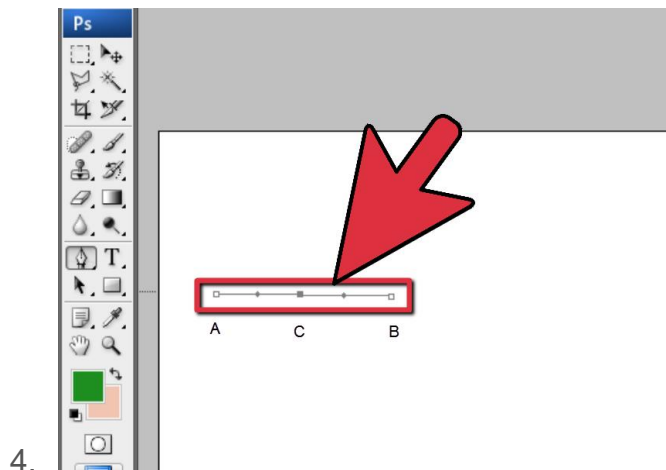
2

Select Paths mode. You can find this in the top toolbar after you select the Pen. Use the dropdown menu to select Paths.



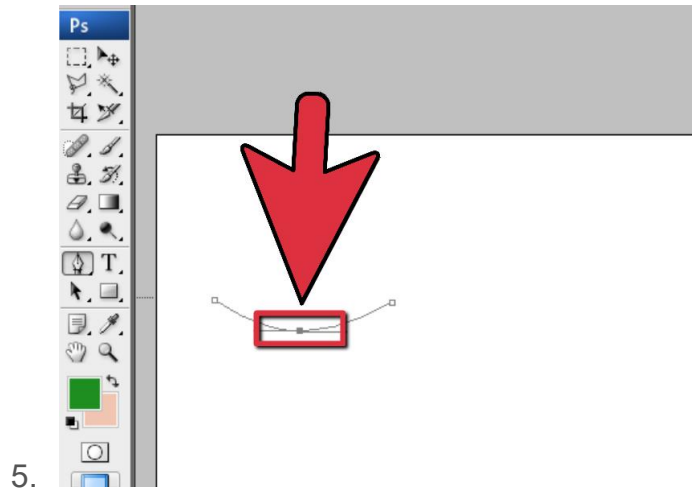
3

Click on the image to create a starting point. This will be point A. You will be creating a straight line and then bending it later to create bent text.



4

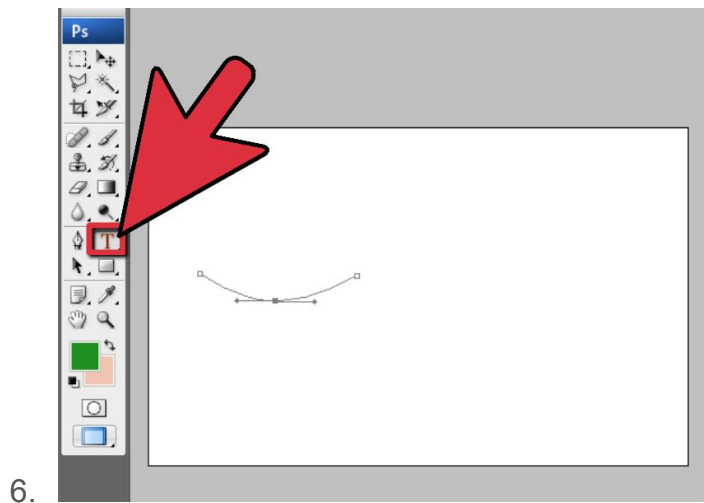
Click where you want the endpoint to be. This will be point B. A straight line will connect your endpoints. Anywhere on this line, single left click to create an “Anchor Point”, C.



5

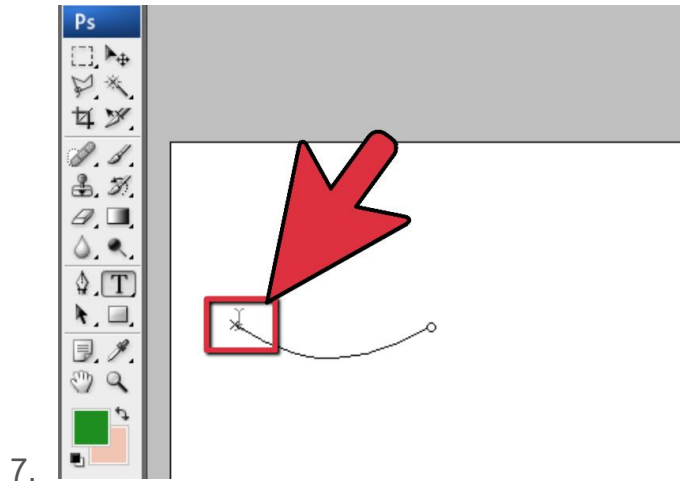
Click and drag the anchor point to bend the line. You will need to hold Ctrl while you drag. The line (ACB) will become a curve whose curvature and depth, will change when you by move the Anchor Point(s).

- You can add as many Anchor Points as you want to create the curve you had in mind.



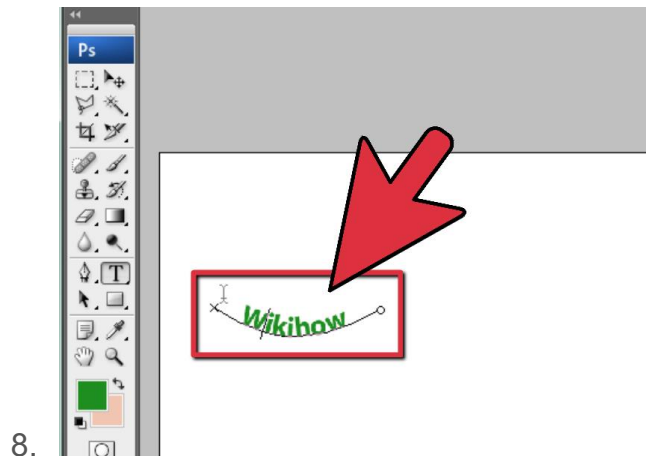
6

Click the Text tool. When you're done, click on the Text tool, or press the T key.



7

Hover your cursor over the path. You will notice the cursor will change when you are touching the path. Click on the curve you just created, on the spot from where you want the text to start.

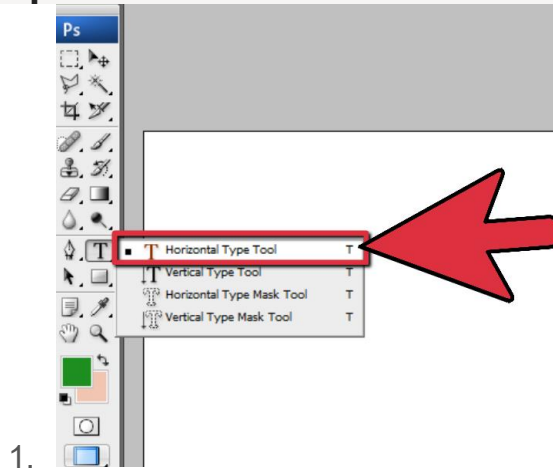


8

Type in your text. After typing, you can format it with your choice of color and size.

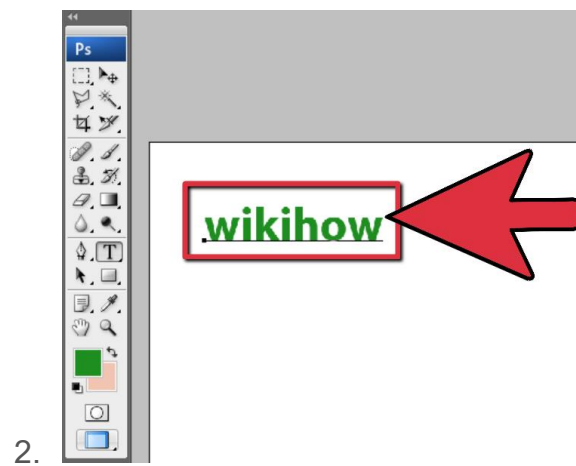
Method 2

Using the Warp Text Tool



1

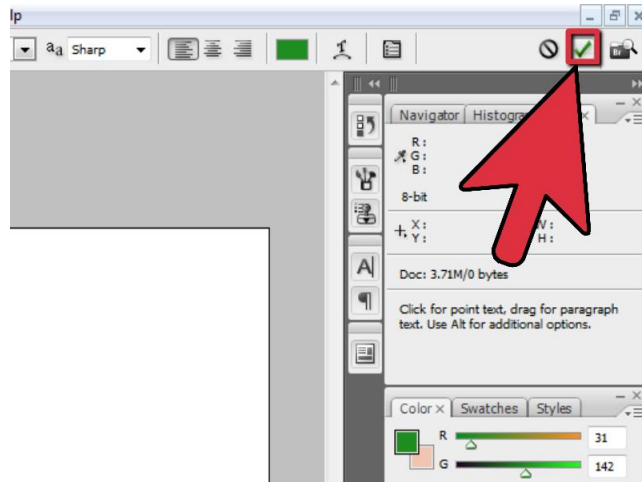
Select the Text tool. At the left side of Photoshop, right click on the button that has a Letter “T” on it and select the horizontal type tool. Click on the work space to create a text field. Photoshop generates a new layer for TEXT.



2

Type the text you want to bend. You may change the font size and the font type by utilizing the options available on top of your work space.

3.

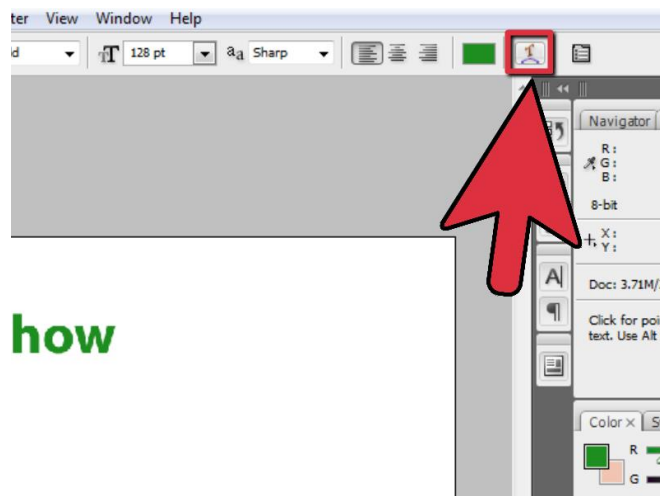


3

Accept your text when finished. After typing, click the button that looks like a check mark. You can still go back later and make changes if you wish.

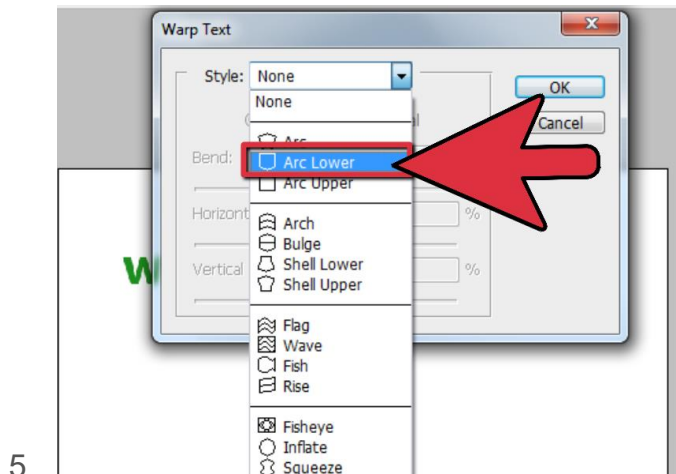
- If you wish change the font size or type after clicking the “check” button just double-click right on top of the text on the work space or double click on the thumbnail on the layer, which automatically highlights the entire text. Use the Text tool options below the main menu to customize the way the text looks on the workspace.

4.



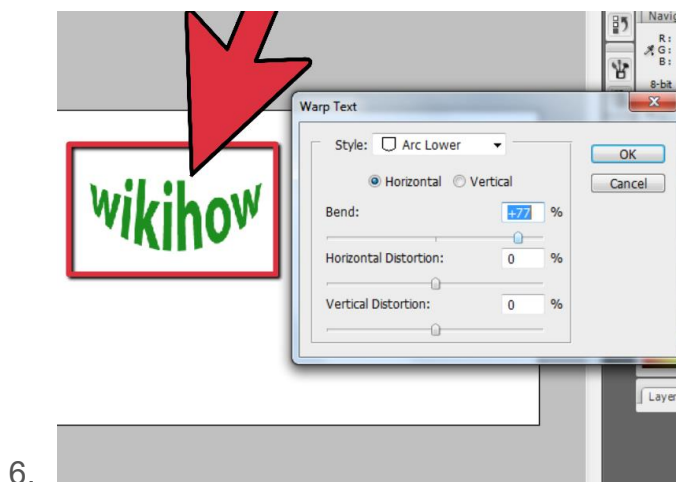
4

Open the Warp Text tool. To bend the text, click the button that has a letter “T” and a curved line underneath it on the Text tool options. This will open a dialog box that is entitled Warp Text.



5

Select the style. Click the Style menu display the different ways Photoshop can bend and warp your text. Each option has a small preview next to it.



6

See how a style looks. For this example, choose arc to bend the text. By doing so, more options become available within the dialog box.

- You may choose either to bend the text vertically or horizontally.
- You can change the degree of to which the text is arched upwards or downwards by moving the “Bend” slider.
- You can distort the text by using the Horizontal and Vertical Distortion sliders.
- Click OK when you are satisfied with your work.